



SUMMIT SERIES

WOOD BURNING STOVES
FOR HEATING LARGE SPACES



SUMMIT

FREESTANDING STOVE

FOR LARGE SPACES



DESIGN-A-FIRE
A SYSTEM BY PACIFIC ENERGY

Pacific Energy Vista Series Wood Stoves are customizable in your choice of door and leg finishes. Available in Nickel and Black.



Black



Nickel

Peak Heat Output

29 kW

COMBINED EFFICIENCY	64%
EMISSIONS	1.1 GM/KG
LOG SIZE (MAX)	45-50 CM
FIREBOX SIZE	84 L
GLASS SIZE	94 CM ²
WEIGHT	APPROX. 197 KG

When you need the heating power to keep large homes warm and comfortable through long winter nights, choose Summit. Crafted for maximum heating capacity with Extended Burn Technology (EBT2) for the longest burn time, the Summit is the wood stoves of choice for bigger spaces and colder nights.


FEATURES

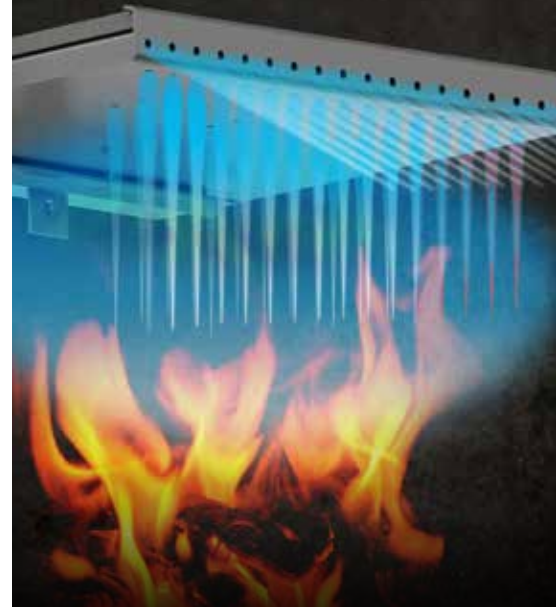
Reliable Non-Catalytic Technology
 Extended Burn Technology (EBT2)
 Easy one-touch operation
 Airwash Technology for clear, clean glass
 Multi-Port combustion air injection system
 Inside and outside combustion air capable
 Floating firebox for extended stove life
 Safe, easy front-to-back fuel loading
 Heavy plate-steel top
 304 Stainless Steel baffle, rails and flame shield
 Boost air for easy lighting
 North-South loading

DESIGN OPTIONS

SUMMIT
 Legs - choice of 2 finishes (nickel and black)
 Pedestal base
 Arched door - choice of 2 finishes (nickel and black)

PERFORMANCE OPTIONS

225 m³/hr Fan
 Easy-to-use ash disposal system



BAFFLE SYSTEM

Pacific Energy is a recognized industry leader in "clean burn" technology, as exemplified in our unique high capacity baffle system for preheating secondary combustion air for re-burning. By burning the combustible elements in the air, we improve our stoves' environmental performance while significantly reducing the amount of wood that is consumed.


FLOATING FIREBOX

Our floating firebox system is legendary in the industry. Solidly designed with steel brick-support rails, it allows key parts to freely expand and contract, which reduces metal fatigue and adds years of life to the entire fireplace. The steel baffle (part of the clean-burning secondary combustion system) and the flame shield (which protects the stove top from intense heat) are all part of the floating firebox system.


EBT2 EXTENDED BURN
T E C H N O L O G Y

Our second-generation Extended Burn Technology, or EBT2, precisely regulates secondary airflow based on vacuum created by the chimney for a longer, cleaner, more economical burn. This automatically adjusts the secondary combustion system, for a cleaner, more efficient burn and extended burn time.

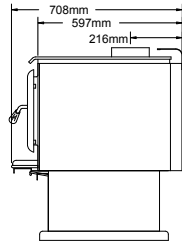
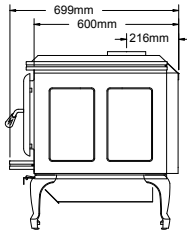
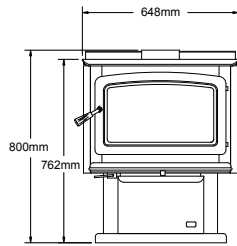
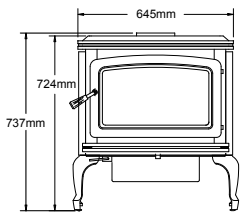

KNIFE EDGE DOOR

A formed and welded knife edge opening creates a superior air tight seal to the door gasket while strengthening the stove face. This is a more labor intensive design but our experience has proven this is the best way to manufacture a fireplace.

SUMMIT LEG MODEL

SUMMIT PEDESTAL MODEL

TECHNOLOGIES



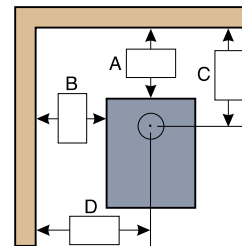
FLOOR PROTECTOR DIMENSIONS

FLOOR PROTECTOR: 6mm Thick cement fiber sheet with a thermal resistance of 0.8m²degK/W

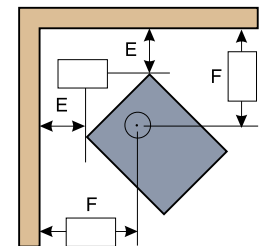
Extending In front of Door Opening (mm)	From Side of Door Opening (mm)
500	200

CLEARANCES TO COMBUSTIBLES

	VERTICAL (mm)				CORNER (mm)	
	A	B	C	D	E	F
Flue Pipe with single length Decromesh/Shield	175	250	400	625	150	510

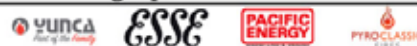


STRAIGHT



CORNER

Distributed by:



1300 474 868
www.pivotstove.com.au



pacificenergy.net

For reference only. Installations should be based on manuals and rating labels.